



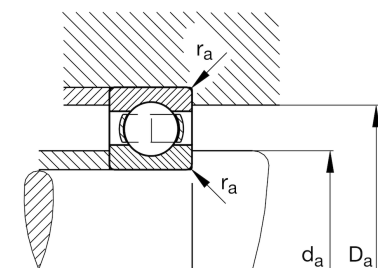
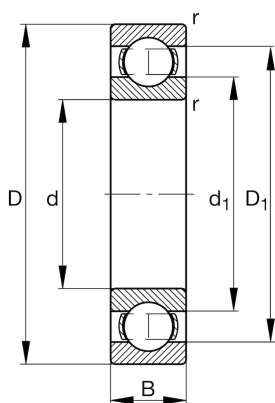
FAG

**6000**

Deep groove ball bearing

Schaeffler ID:  
0383904500000Deep groove ball bearing 60, single row,  
steel sheet metal cage

## Technical information

**Main Dimensions & Performance Data**

d	10 mm	Bore diameter
D	26 mm	Outside diameter
B	8 mm	Width
$C_r$	4.850 N	Basic dynamic load rating, radial
$C_{0r}$	1.970 N	Basic static load rating, radial
$C_{ur}$	96 N	Fatigue load limit, radial
$n_G$	40.500 1/min	Limiting speed
$n_{gr}$	27.500 1/min	Reference speed
	18 g	Weight

**Dimensions**

$r_{min}$	0,3 mm	Minimum chamfer dimension
$d_1$	14,7 mm	Shoulder diameter inner ring

**Mounting dimensions**

$d_{amin}$	12 mm	Minimum diameter shaft shoulder
$D_{amax}$	24 mm	Maximum diameter of housing shoulder
$r_{amax}$	0,3 mm	Maximum fillet radius

**Calculation factors**

$f_0$	12,4	Calculation factor
-------	------	--------------------

**Temperature range**

$T_{min}$	-30 °C	Operating temperature min.
$T_{max}$	120 °C	Operating temperature max.